

# Ravitej Projects

A **Ravitej Group** Enterprise  
Since 2004



Engineering, construction  
And  
infrastructure development

# ABOUT US

**Ravitej Projects** is an infrastructural development unit floated under Ravitej Group. At Ravitej Projects, we take pride in our unwavering commitment to shaping the world through infrastructure development, Hydro-power Projects, and Mining endeavors. Our expertise extends to the construction of Highways and Irrigation Projects that connect communities and facilitate the flow of commerce. We understand the vital role infrastructure plays in the development of regions, and we take our responsibility seriously.

Behind every project, you'll find a team of experienced engineers, dedicated professionals who bring years of expertise to the table. Our engineers, coupled with our state-of-the-art machine fleet, turn complex ideas into tangible solutions that stand the test of time.

We achieved a turnover of Rs.185 crores in F.Y 19-20 & Rs.201 Crores in F.Y 20-21 & Rs.219 Crores in F.Y 21-22 & Rs.330 Crores F.Y 22-23 in our flagship firm RAVITEJ PROJECTS alone.

# **KEY MANAGERIAL PERSONNEL**

## **Mr. JASTI SRINIVAS**

### **MANAGING DIRECTOR**

Jasti Sreenivas, a Founder Director, graduated with a Postgraduate degree in Mechanical Engineering from the Coimbatore Institute of Technology. He assumed a partnership role at Engineers Auto Electrical Industries in 1989, focusing on the automobile segment. With 30 years of comprehensive professional experience, he has excelled in various domains, including Automobile, Electrical, Mining, Crushers, and Civil Engineering, particularly in Planning and Execution within Ravitej Projects.

## **Dr. MOHAMMED MEERAN (NAWAB)**

### **DIRECTOR**

Dr. MD. Meeran, a Founder Director of Ravitej Projects, holds a Bachelor of Engineering in Industrial Production from Manipal Institute of Technology (Manipal University). He was honored with an Honorary Doctor of Letters by the University of South America. With four decades of professional experience, his expertise encompasses Automobile, Electrical, Mining, and Crushers. He oversees group finance, strategy, planning, development, and central procurement within Ravitej Projects.

## **Mr. PASANGULA ADINARAYANA**

### **DIRECTOR**

Pasangula Adinarayana began his professional journey in the Indian Army, serving from 1980 to 1996. Afterward, he ventured into the Mining and Crushing industry, holding prominent management positions. Joining Ravitej Group in 2004 as a Technical Project Manager, his expertise propelled him to the role of a whole-time Director, overseeing all project sites comprehensively since 2006.

# VISSION - MISSION

Commitment to client satisfaction

Purity, Safety, Quality and Excellence

Adhering to ethical business practices

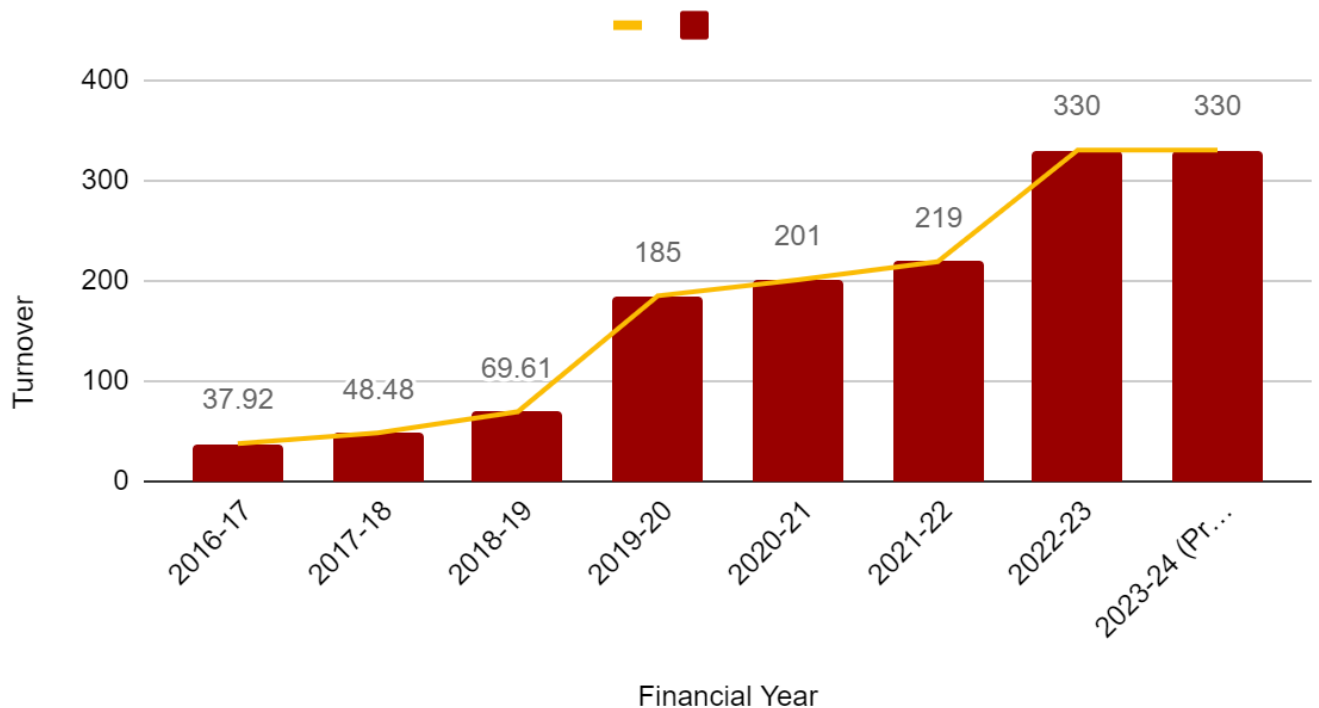
Maitain Environmental Standards

Creating value and achieving deliverable standards

Encourage innovation, professional integrity

# TURNOVER

<b>FINANCIAL YEAR</b>	<b>TURNOVER (IN CRORES)</b>
2016-17	37.92
2017-18	48.48
2018-19	69.61
2019-20	185.00
2020-21	201.00
2021-22	219.00
2022-23	330.00
2023-24	330.00 (Provisional)



# SECTORS



At Ravitej Projects, we specialize in comprehensive infrastructure solutions across Hydro-Power, Irrigation, Roads, Highways, Mining, and Urban Development.

Our expertise lies in crafting sustainable, efficient, and future-ready projects. As a dynamic player in the industry, we not only meet the current demands but constantly strive to set new standards.

From harnessing nature's power to implementing effective urban development projects, Ravitej Projects is synonymous with innovation and progress, continually shaping a resilient and interconnected environment within our operational sphere.

# ON GOING PROJECTS

NAME OF THE CLIENT	LOCATION	DESCRIPTION OF THE WORK	PROJECT COST (IN CRORES)
<p style="text-align: center;">NHPC</p> <p style="text-align: center;">PRINCIPAL CONTRACTOR: RITHWIK-HIPL JOINT VENTURE</p>	<p style="text-align: center;">JORETHANG, SIKKIM</p>	<p style="text-align: center;">CONSTRUCTION OF BALANCE CIVIL WORKS PACKAGE LOT -I FOR DIVERSION CHANNEL, COFFER DAMS, DAM, SPILLWAY &amp; STILLING BASIN, INTAKE STRUCTURE, DESILTING CHAMBERS, SFT, HRT, SURGE SHAFT, PRESSURE SHAFT, SURFACE POWERHOUSE, TRC AND OTHER ASSOCIATED STRUCTURES ETC. OF RANGIT-IV HE PROJECT, SIKKIM.</p>	<p style="text-align: center;">675.00</p>
<p style="text-align: center;">DEPARTMENT OF IRRIGATION, GOVERNMENT OF TELANGANA</p> <p style="text-align: center;">PRINCIPAL CONTRACTOR:- BVSr - SKR - HEC JV (BRR PROJECTS AND SKR CONSTRUCTIONS)</p>	<p style="text-align: center;">SATHUPALLY, TELANGANA</p>	<p style="text-align: center;">SITA RAMA LIFT IRRIGATION PROJECT PACKAGE NO.12- SATHUPALLY TRUNK EARTHWORK EXCAVATION, FORMING EMBANKMENT AND CONSTRUCTIONS OF CM &amp; CD WORKS, CC LINING FOR FORMATION</p> <ul style="list-style-type: none"> <li>➤ PALAVAGU BRANK CANAL FROM Km.1.925 NEAR GANDUGULAPALLY (V) TO Km.13.500 NEAR ARLAPENTA (V)</li> <li>➤ GOLLAGUDEM DISTRIBUTORY FROM Km.13.500 NEAR ARLAPENTA (V) TO Km.31.875 AT MALKARAM (V) OF DAMMAPETA (M)</li> <li>➤ VINAYAKAPURAM DISTRIBUTORY FROM KM. 0/0 NEAR ARLAPENTA (V) OF DAMMAPETA (M) TO KM. 23.850 NEAR VINAYAKAPURAM (V) OF ASWARAOPETA (M) IN BHADRADRI KHAMMAM DISTRICT IN TELANGANA</li> </ul>	<p style="text-align: center;">298.74</p>
<p style="text-align: center;">DEPT. OF IRRIGATION, GOVERNMENT OF TELANGANA</p> <p style="text-align: center;">PRINCIPAL CONTRACTOR:- L&amp;T</p>	<p style="text-align: center;">PARNASALA, TELANGANA</p>	<p style="text-align: center;">CONSTRUCTION OF RETAINING WALL AT PARNASHALA FOR “SITAMMA SAGAR MULTI PURPOSE PROJECT”</p>	<p style="text-align: center;">65.41</p>

DEPT. OF IRRIGATION, GOVERNMENT OF TELANGANA  PRINCIPAL CONTRACTOR:- KNR CONSTRUCTIONS LTD	TELANGANA	PROVIDING AND LAYING IN SITU VIBRATED M-20 GRADE CEMENT CONCRETE USING 40MM DOWN SIZE APPROVED, CLEAN, HARD, GRADED AGGREGATES FOR SUB-STRUCTURE/ SUPER STRUCTURE WORKS INCLUDING COST OF MATERIALS, MACHINERY, LABOUR, FORMWORK, SCAFFOLDING, CLEANING, BATCHING, MIXING, PLACING IN POSITION, LEVELLING, VIBRATING, FINISHING, CURING ETC., COMPLETE WITH INITIAL LEAD UPTO 50M AND ALL LIFTS	63.84
NHAI  PRINCIPAL CONTRACTOR:- GRINFRA PROJECTS LTD	MADANAPALLE, ANDHRA PRADESH	CONSTRUCTION OF FOUR LANES FOR NH-71 FROM MADANAPALLI TO PILERU PACKAGE -1 ON HAM MODE IN STATE OF AP UNDER BHARATMALA PARIYOJANA	53.04
APMDC  PRINCIPAL CONTRACTOR:- TRIVENI EARTH MOVERS PVT LTD	MANGAMPETA, ANDHRA PRADESH	DEPLOYMENT OF HEMM FOR LOADING AND HAULING OF OVERBURDEN FROM MINES TO WASTE TO DUMP WITHIN A LEAD OF 5KM	50.00
VIJAYAWADA MUNICIPAL CORPORATION	VIJAYAWADA, ANDHRA PRADESH	CONSTRUCTION OF RETAINING WALLS, APPROACHES ON BOTH SIDES OF RUB (RAILWAY UNDER BRIDGE) AND ELECTRIFICATION WORKS FOR RUB AT MADHURA NAGAR UNDER EPC SYSTEM	15.00
DEPT. OF IRRIGATION, GOVERNMENT OF AP  PRINCIPAL CONTRACTOR:- RITHWIK PROJECTS PVT. LTD.	NANDYAL, ANDHRA PRADESH	CONSTRUCTION OF JOLADARASI RESERVOIR WITH 0.8 TMC ACROSS KUNDU RIVER AT JOLADARASI (V), KOILKUNTALA (M), KURNOOL DISTRICT	207.00
NHPC LTD.	DIKCHU, SIKKIM	PACKAGE -4, CIVIL WORKS FOR CLEANING, REPAIR AND RESTORATION WORK OF HRT (ADIT-1 TO ADIT-3) OF TEESTA-V POWER STATION, SIKKIM	10.65

**TOTAL WORK IN HAND**

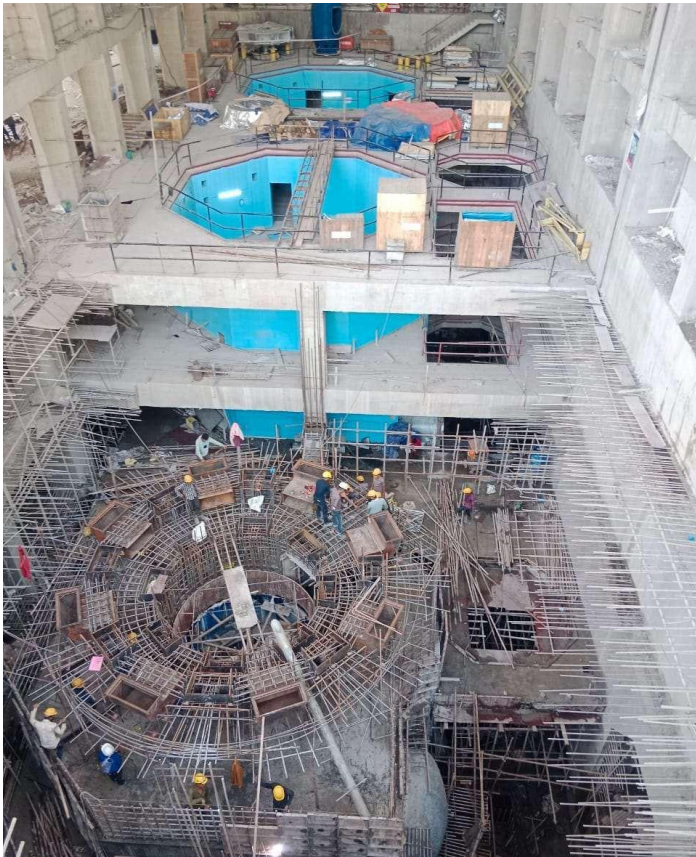
**1438.95 CR**



# RANGIT IV HYDRO ELECTRIC PROJECT



VALUE OF THE PROJECT	INR 675.00 CR
LOCATION	JORETHANG, SIKKIM
CLIENT	NHPC LIMITED
AWARD DATE	23RD SEPTMEBER 2021
HEIGHT OF THE DAM	44 Mts.
LENGTH OF THE DAM	135.3 Mts.
TYPE OF DAM	CONCRETE GRAVITY DAM



LENGTH OF THE TUNNEL	6.50 KM
DIAMETER OF THE TUNNEL	7.1 Mts.
POWERHOUSE	SURFACE (3X40 MW)

### MAJOR QUANTITIES

EXCAVATION	3,60,000 Cum
CONCRETE	1,40,000 Cum
TUNNEL EXCAVATION	1,95,000 Cum
TUNNEL CONCRETE	1,22,200 Cum

# SITA RAMA LIFT IRRIGATION PROJECT



## PACKAGE NO 12- SATHUPALLY TRUNK

EARTHWORK EXCAVATION, FORMING  
EMBANKMENT AND CONSTRUCTIONS  
OF CM & CD WORKS, CC LINING FOR  
FORMATION

- PALAVAGU BRANK CANAL  
FROM Km.1.925 NEAR  
GANDUGULAPALLY (V) TO  
Km.13.500 NEAR ARLAPENTA (V)
- GOLLAGUDEM DISTRIBUTORY  
FROM Km.13.500 NEAR  
ARLAPENTA (V) TO Km.31.875 AT  
MALKARAM (V) OF DAMMAPETA  
(M)
- VINAYAKAPURAM  
DISTRIBUTORY FROM KM. 0/0  
NEAR ARLAPENTA (V) OF  
DAMMAPETA (M) TO KM. 23.850  
NEAR VINAYAKAPURAM (V) OF  
ASWARAOPETA (M) IN  
BHADRADRI KHAMMAM  
DISTRICT IN TELANGANA

EARTHWORK EXCAVATION & FORMING EMBANKMENT	85,92,127 Cum
CEMENT CONCRETE	1,13,460 Cum
CEMENT CONCRETE LINING	6,33,992 Sqm
REINFORCEMENT STEEL	5344 MT

# MANGAMPET BARYTES PROJECT



DEPLOYMENT OF HEMM FOR  
LOADING AND HAULING OF  
OVERBURDEN FROM MINES  
TO WASTE TO DUMP WITHIN  
A LEAD OF 5KM.

OVERBURDEN	15 LAKH CUM
------------	----------------

# SITAMMA SAGAR MULTI PURPOSE PROJECT



## CONSTRUCTION OF RETAINING WALL

EARTHWORK EXCAVATION	1,31,984 Cum
CONCRETE	63,870 Cum
STEEL	200 MT
HARDROCK EXCAVATION	4,080 Cum



# MADANAPALLI - PILERU SECTION OF NH 71

FOUR LANING OF NH 71 FROM MADANAPALLI (DESIGN KM 0.00/EXISTING KM 0.000) TO PILERU (DESIGNKM 55.900/ EXISTINGKM 59.250) PACKAGE -1 IN THE STATE OF ANDHRA PRADESH UNDER BHARATMALA PARIYOJANA.



MODE	HYBRID ANNUITY MODE (HAM)
DESIGN LENGTH	55.900KM
EXCAVATION	3.73 LAKH Cum
EMBANKMENT	25.13 LAKH Cum



# VIJAYAWADA MUNICIPAL CORPORATION (VMC) WORKS



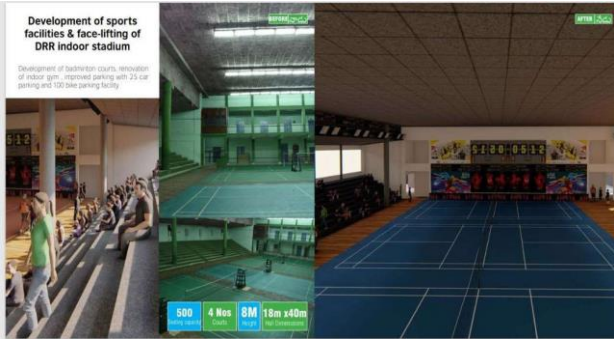
REJUVENATION OF OLD  
DUMPSITE INTO MODEL PARK

MODERNISATION OF PARKS &  
CONSTRUCTION OF CC ROADS



CONSTRUCTION OF  
SWIMMING POOLS

DEVELOPMENT OF  
SPORTS FACILITIES



FACELIFTING INTERIORS OF  
STADIUM

# VMC RAILWAY UNDER BRIDGE (RUB) WORKS



## RAILWAY UNDER BRIDGE (RUB) WORKS

- CONSTRUCTION OF RETAINING WALLS
- APPROCHES ON BOTH OF RUB
- ELECTRIFICATION WORKS FOR RUB

LOCATION	MADHURA NAGAR, VIJAYAWADA
MODE	EPC



# COMPLETED PROJECTS

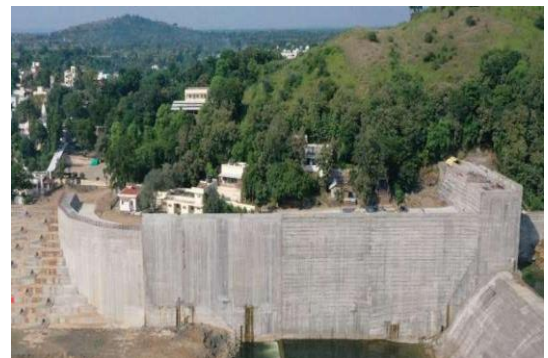
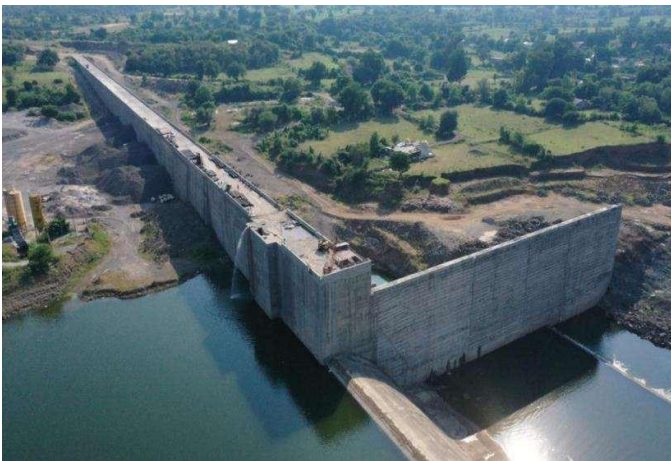
CLIENT	LOCATION	DESCRIPTION	VALUE (IN CRORES)
<p>SARDAR SAROVAR NARMADA NIGAM LTD (SSNNL)</p> <p>PRINCIPAL CONTRACTOR:- RITHWIK PROJECTS PVT LTD</p>	<p>NARMADA DISTRICT, GUJARAT (NEAR STATUE OF UNITY)</p>	<p>GARUDESHWAR WEIR DAM PROJECT</p>	<p>173.00</p>
<p>NHAI</p> <p>PRINCIPAL CONTRACTOR:- GR INFRA PROJECTS LTD</p>	<p>DEVARAPALLY-KOVVURU, ANDHRA PRADESH</p>	<p>FOUR LANING OF GUNDUGOLANU-DEVARAPALLY-KOVVURU SECTION OF NH6 FROM KM 15+320 TO KM 46+000 UNDER BHARATMALA PARIYOJANA on HYBRID ANNUITY MODE</p>	<p>175.00</p>
<p>DEPTARMENT OF IRRIGATION, GOVERNMENT OF TELANGANA</p> <p>PRINCIPAL CONTRACTOR:- RAGHAVA CONSTRUCTIONS</p>	<p>NALGONDA DISTRICT, TELANGANA</p>	<p>COSNTRUCTION OF DINDI BALANCING RESERVOIR OF SLBC TUNNEL SCHEME ACROSS DINDI RIVER NEAR MOTHIA THANDA OF TELADEVARAPALLI (V), CHANDAMPET (M)</p>	<p>95.00</p>
<p>NHAI</p> <p>PRINCIPAL CONTRACTOR:- M/S VISWA RAGHAVA (JV)</p>	<p>TELANGANA</p>	<p>ROAD REHABILITATION AND UPGRADATION OF NH-221 (NEW NH - 30) FROM KM 71/200 TO KM 121/000 (AP/TELANGANA BORDER TO RUDRAMPUR SECTION) IN THE STATE OF TELANGANA TO TWO LANE WITH PAVED SHOULDERS UNDER NHDP-IV PHASE ON EPC BASIS FROM R&amp;B NH-DIVISION, HYDERABAD, TELANGANA - 500082</p>	<p>81.26</p>
<p>GOVERNMENT OF TELANGANA</p> <p>PRINCIPAL CONTRACTOR:- RAGHAVA CONSTRUCTIONS</p>	<p>TELANGANA</p>	<p>ROAD FROM (i) GAJWEL TO DOULATABAD Km 0/0 to Km.22/5 (ii) RAMAYAMPET TO DOULATABAD ROAD FROM Km 0/0 to 22/0 in MEDAK DT. IN THE STATE OF TELANGANA</p>	<p>50.00</p>



# GARUDESWAR WEIR



CLIENT	SARDAR SAROVAR NARMADA NIGAM LIMITED
WEIR HEIGHT	31.47 Mts.
CONCRETE	3,89,297 Cum
STEEL	3,217 MT



# DINDI BALANCING RESERVOIR



CONCRETE	6,20,000 Cum
REINFORCEMENT STEEL	1500 MT



# GUNDUGOLANU - DEVARAPALLI - KOVVURU SECTION OF NH 16

WORK	CONSTRUCTION OF ROAD FROM KM 15+320 TO KM 46+000
CLIENT	NHAI
MODE	HYBRID ANNUITY MODE (HAM)



EXCAVATION	1,57,569 Cum
EMBANKMENT AND SUBGRADE	20,25,836 Cum
GSB	1,84,595 Cum
WMM	1,50,570 Cum
STEEL	2,712 MT
CONCRETE	30,625 Cum

# REHABILITATION AND UPGRADATION OF NH 30



LOCATION	KM 71+200 TO KM 121+000 OF NH 30, TELANGANA BORDER TO RUDRAMPUR
LENGTH OF THE PROJECT	49.37 KM
MODE	EPC

# CRUSHERS AND MINING

<b>S.NO</b>	<b>QUARRY AND CRUSHER LOCATION</b>	<b>EQUIPMENT</b>
1	SY.NO.1, MARTUR VILLAGE, ANAKAPALLI MANDAL, VISAKHAPATNAM. AP	METSO 200 TPH 3 STAGECRUSHER
2	RAMSAGAR VILLAGE, DOULTABAD MANDAL, MEDAK DIST, TELANGANA	METSO 250 TPH 3 STAGECRUSHER
3	GARLODUVILLAGE, ENUKOR MANDAL, KHAMMAM DIST, TELANGANA	METSO 250 TPH 3 STAGECRUSHER
4	GOLLAGUDEM VILLAGE, ASWAPURAM MANDAL, BHADRADRI KOTHAGUDEM, MANUGUR, TELANGANA	METSO 250 TPH 2 STAGE CRUSHER
5	BURAGAPALLI VILLAGE, CHOWDEPALLI MANDAL, PUNGANOOR TALUKA, CHITTOOR DISTRICT, ANDHRA PRADESH - 517257	PUZZOLANA 250 TPH 2 STAGE CRUSHER
6	BANDAPURAM VILLAGE, DEVARAPALLI MANDAL, WEST GODAVARI DIST, TELANGANA	METSO 250 TPH 3 STAGECRUSHER
7	SIKKIP, KAMLING, SORENG, SIKKIM - 737121	PUZZOLANA 200 TPH 2 STAGECRUSHER along with SAND CLASSIFIER

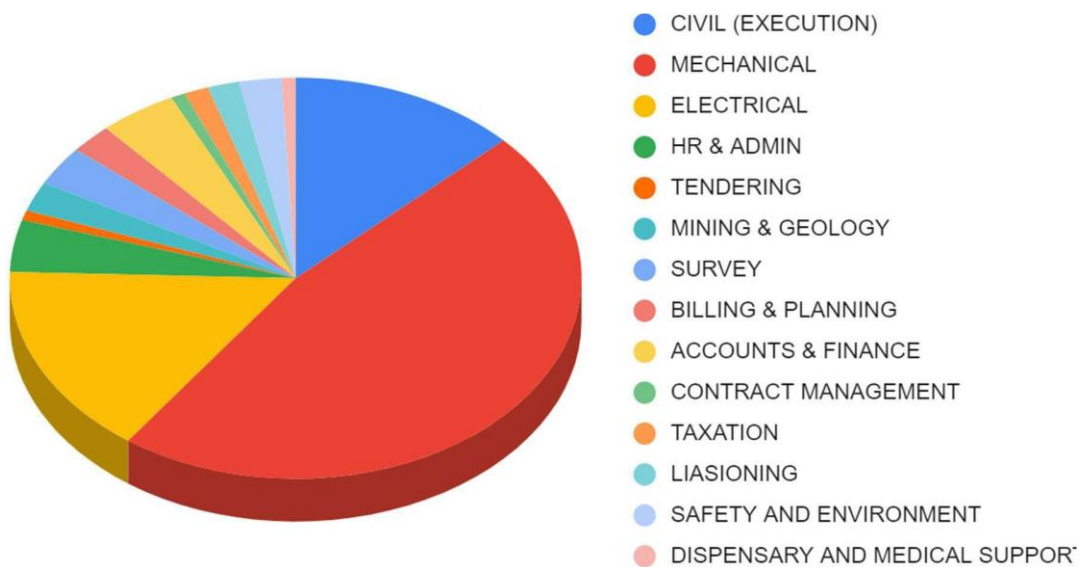
# EQUIPMENT

EQUIPMENT	QUANTITY
JUMBO DRILL	03
SHORT CRETE MACHINE	03
CRUSHERS	07
SAND CLASSIFIER	03
470 RANGE EXCAVATORS	02
360 RANGE EXCAVATOR	01
300 RANGE EXCAVATORS	03
220 RANGE EXCAVATORS	23
140 RANGE EXCAVATORS	02
70 RANGE EXCAVATORS	02
30 RANGE EXCAVATOR	01
ROCK BREAKER	12
BHARAT BENZ TIPPERS	78
VOLVO FMX 440 TIPPERS	20
WHEEL LOADERS	08
SKID STEER LOADER	02
BACKHOE LOADERS	06
HYDRA/CRANE	05
SCISSOR LIFTS	02
TOWER CRANES	02
LOADALL MACHINES	02
CONCRETE PLACER MACHINE	01

EQUIPMENT	QUANTITY
ROC DRILLING MACHINES	06
AIR COMPRESSORS	12
CONCRETE PUMPS	15
GROUTING PUMPS	05
AUGER MAX	01
GANTRY'S	04
TRANSIT MIXERS	26
SELF LOADING CONCRETE MIXERS	04
BATCHING PLANT 90CUM	04
BATCHING PLANT 60CUM	05
BATCHING PLANT 45CUM	06
WMM PLANTS	02
HOT MIX PLANT	02
DIESEL GEN SETS	20
HSD BROWSERS	05
WATER TANKERS	08
GRADERS	03
SENSOR PAVER	01
SOIL COMPACTORS	04
DOZERS	02
UTILITY VEHICLES	30
STAFF BUSES	06
AMBULANCES	03

# STAFF AND PERSONNEL

DEPARTMENT	NUMBER
CIVIL (EXECUTION)	065
MECHANICAL	236
ELECTRICAL	078
HR & ADMIN	021
TENDERING	004
MINING & GEOLOGY	012
SURVEY	016
BILLING & PLANNING	012
ACCOUNTS & FINANCE	022
CONTRACT MANAGEMENT	004
TAXATION	007
LIASIONING	09
SAFETY AND ENVIRONMENT	012
DISPENSARY AND MEDICAL SUPPORT	004



# CLIENTS

At Ravitej Projects, we don't just build structures; we forge excellent relationships, ensuring each project is a collaborative journey marked by trust, communication, and unparalleled commitment to our clients' success.

 <p>एन एच पी सी NHPC</p>	 <p>RITHWIK PROJECTS PRIVATE LIMITED (An ISO 9001 :2008 Company)</p>	 <p>GOVERNMENT OF TELANGANA తెలంగాణ ప్రభుత్వము</p>
 <p>B V S R</p>	 <p>Sardar Sarovar Narmada Niqam Limited</p>	 <p>L T</p>
 <p>GRIL®</p>	 <p>NRC</p>	 <p>vijayawada MUNICIPAL CORPORATION</p>
 <p>भारत प्रा NHAI</p>	 <p>Raghava Constructions</p>	 <p>THRIVENI</p>

# **BANK DETAILS**

<b>BANK LIMITS</b>	<b>Rs.</b>
<b>CC LIMITS</b>	<b>24 CRORES</b>
<b>BG LIMITS</b>	<b>24 CRORES</b>

<b>BANK</b>	<b>UNION BANK OF INIDA</b>
<b>BRANCH</b>	<b>MID CORPORATE BRANCH, VIJAYAWADA</b>
<b>A/C NO.</b>	<b>560261000001958</b>
<b>IFSC CODE</b>	<b>UBIN0579220</b>
<b>ACCOUNT TYPE</b>	<b>CASH CREDIT</b>



**REGIONAL OFFICE:**

54-5-98, 4<sup>TH</sup> ROAD, JAWAHAR AUTO NAGAR,  
VIJAYAWADA - 520007, KRISHNA DISTRICT,  
ANDHRA PRADESH - 521101

---

**HEAD OFFICE:**

Door No. 6/3/1102, Flat no. A207,  
HIDDEN TREASURE APARTMENTS,  
RAJBHAVAN ROAD, SOMAJIGUDA,  
HYDERABAD, TELANGANA

EMAIL ID : [info@ravitejprojects.com](mailto:info@ravitejprojects.com)  
[jsravitej5@gmail.com](mailto:jsravitej5@gmail.com)

URL : [www.ravitejprojects.com](http://www.ravitejprojects.com)

LANDLINE : 0866-2542474

---

